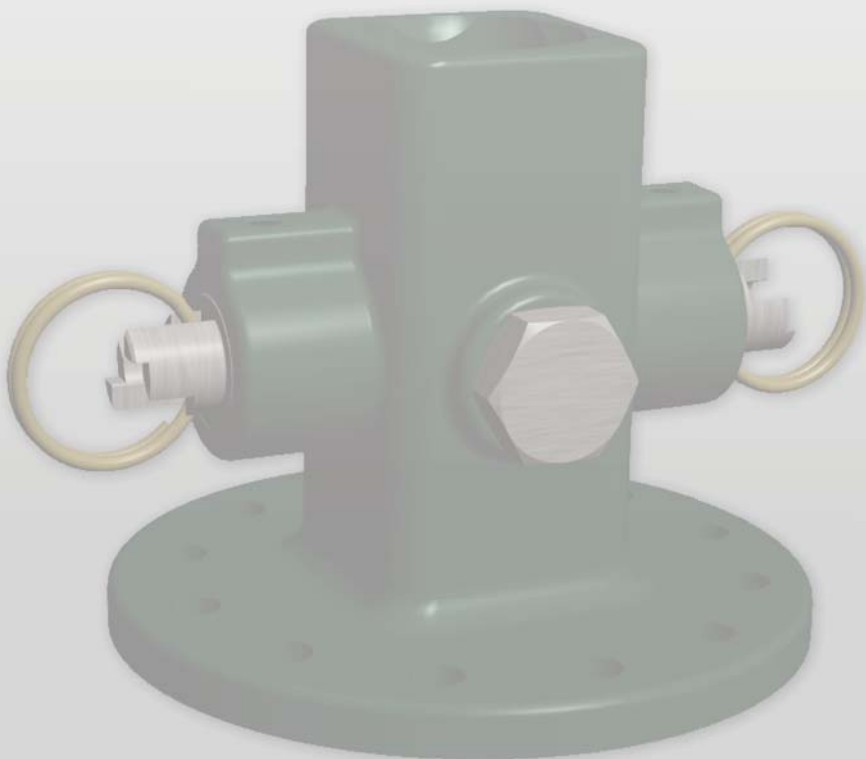


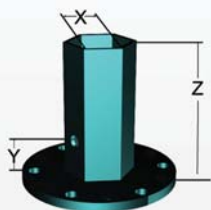
Anchor Placement Tools

- 6 Bolt Kelly Bar Adapters - 58
- 6 Bolt Locking Dog - 58
- 6 & 12 Hole Bolt Circles - 58
- SS Helical Pier Anchor - 58
- Drive End Wrenches & Extensions - 59
- 12 Bolt Kelly Bar Adapters - 60
- 12 Bolt Locking Dog - 60
- Large Hub Drive End Wrenches & Adapters - 60



Anchor Tools

Anchor Placement Tools & Accessories



Each of these Kelly Bar Adapters has six holes for 1/2" bolts on a 5 1/4" bolt circle and comes with six 1/2" grade 5 bolts, nuts & lock washers, bent arm pin with coil lock.

5 1/4" Bolt-Circle Kelly Bar Adapters for 10,000 ft.-lb.

Maximum Installing Torque.

Part No.	Kelly Bar Shape	Kelly Bar Dimension			Weight, lb.
		X	Y	Z	
20001	Square	2 1/2"	2 1/4"	3 1/2"	10
20350	Hex	2"	5"	6 1/8"	10
20040	Hex	2 1/2"	4 1/4"	8 1/8"	12
20050	Hex	2 5/8"	4 1/4"	8 1/8"	12



Standard Locking Dog Assembly has six 1/2" holes on 5 1/4" bolt circle and includes six 1/2" grade 5 bolts, nuts and lock washers.

Part No.	Description	Weight, ea.
20090	Complete Standard Locking Dog Assembly	20 lb.
20101	Locking Dog Replacement Kit includes parts necessary to replace both locking dogs	4 lb.

Part No.	SS Anchor Series Tool	Bolt Circle, Holes	Approx. Weight, lb.
20030	SST/SS150	5 1/4", (6) 1/2" holes	7
20131	SS175	7 5/8", (12) 5/8" holes	18
20391	SS200	7 5/8", (12) 5/8" holes	18
20401	SS225	7 5/8", (12) 5/8" holes	30



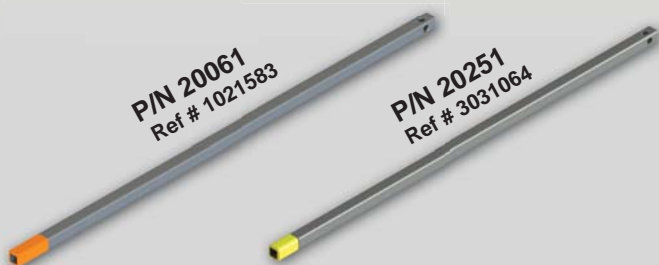
For SS Helical Pier Anchors

These drive tools require the appropriate Kelly Bar Adapter. Each comes with bolts, nuts and lock washers and a bent arm retaining pin with coil lock.

Anchor Placement Tools

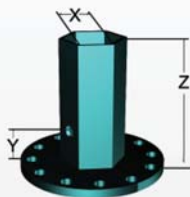
7ft. Drive-End Wrench		
Part No.	Description	Weight, ea.
20061 Orange	Standard Drive-End Wrench installs 8,000 ft.-lb (small hub) anchors, 10,000 ft.-lb. (small hub) anchors, 4,000 ft.-lb. anchors, 6,000 ft.-lb. anchors	57 lb.
20251 Yellow	Hybrid Drive-End Wrench installs 8,000 ft.-lb. (large hub) anchors, 6,000 ft.-lb. anchors, 7,000 ft.-lb. anchors	64 lb.
3 1/2 ft. Drive-End Wrench		
20071 Orange	Standard Drive-End Wrench installs 8,000 ft.-lb (small hub) anchors, 10,000 ft.-lb. (small hub) anchors, 4,000 ft.-lb anchors, 6000 ft.-lb. anchors	29 lb.
20241 Yellow	Hybrid Drive-End Wrench installs 8,000 ft.-lb. (large hub) anchors, 6,000 ft.-lb. anchors, 7,000 ft.-lb anchors	28 lb.

Extension Wrench for Standard and Hybrid Drive-End Wrenches		
Part No.	Description	Weight, ea.
20011	3 1/2 ft. Extension	42 lb.
20021	7 ft. Extension	70 lb.



Anchor Tools

Anchor Placement Tools & Accessories



Each of these Kelly Bar Adapters has twelve holes for $\frac{5}{8}$ " bolts on a $7\frac{5}{8}$ " bolt circle and comes with twelve $\frac{5}{8}$ " grade 2 bolts, nuts & lock washers, bent arm pin with coil lock.

$7\frac{5}{8}$ " Bolt-Circle Kelly Bar Adapters for 15,000 ft.-lb.

Maximum Installing Torque.

Part No.	Kelly Bar Shape	Kelly Bar Dimension			Weight, lb.
		X	Y	Z	
20140	Hex	2 $\frac{1}{2}$ "	4 $\frac{3}{8}$ "	8 $\frac{1}{4}$ "	23
20150	Hex	2 $\frac{5}{8}$ "	4 $\frac{3}{8}$ "	8 $\frac{1}{4}$ "	23
20411	Hex	3"	3 $\frac{1}{2}$ "	8"	27
20161	Square	2 $\frac{1}{2}$ "	2 $\frac{1}{2}$ "	7"	22
20451	Square	3"	3 $\frac{1}{2}$ " & 2 $\frac{1}{16}$ "	7"	23



12 Bolt Locking Dog

Twelve $\frac{5}{8}$ " holes on a $7\frac{5}{8}$ " bolt circle. Includes twelve $\frac{5}{8}$ " bolts, nuts and lockwashers. Also includes bent arm pin with coil lock.

P/N 20171
(303-0981)

Drive End Wrenches

Part No.	Length	Description
20181	3 $\frac{1}{2}$ ft.	Installs 15,000 ft.-lb. (large hub) Drive String System Anchors, 8,000 ft.-lb (large hub) Drive String System and all 1 $\frac{1}{2}$ " Core Anchors
20191 Red	7 ft.	

Extension Assemblies

Part No.	Length	Description
20201	3 $\frac{1}{2}$ ft.	Attach extension to drive-end wrench for additional depth
20211	7 ft.	



P/N 20191
Ref # 3030983